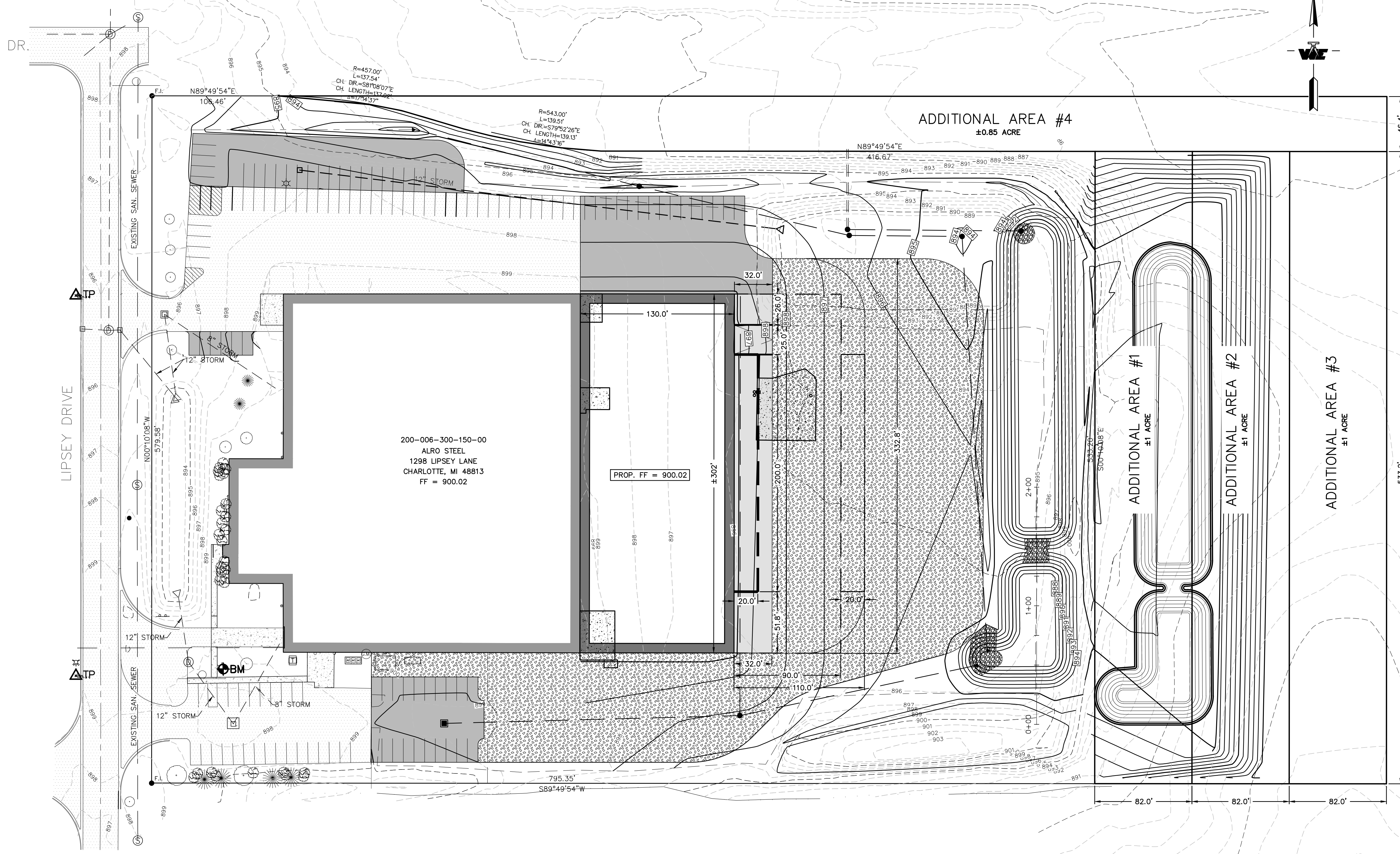
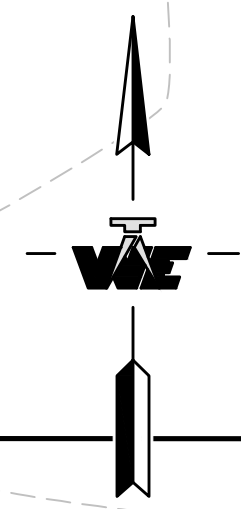
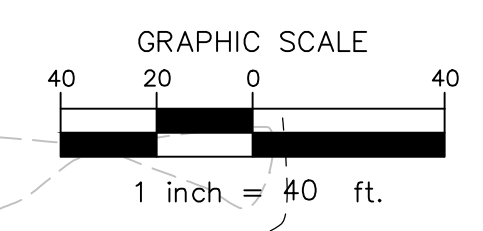


**BENCHMARKS:**  
 #1 TOP OF CONCRETE LIGHT POLE BASE  
 SOUTH ENTRANCE TO PROPERTY OFF LIPSEY DRIVE  
 (FROM 2011 PLANS)  
 ELEVATION= 899.24



REVISION	DATE	DRAWN	DESCRIPTION

**WOLVERINE**  
 Engineers & Surveyors, Inc.  
 312 North Street  
 Mason, Michigan 48854  
 Ph: 317 676 9200  
 Fax: 317 676 9396  
 http://www.wolvenge.com

**PERMIT SET**

PROJECT: ALRO STEEL - CHARLOTTE ADDITION  
 1298 LIPSEY DRIVE, CITY OF CHARLOTTE  
 EATON COUNTY, MICHIGAN 48813

APPROVED: DBH  
 CHECKED: DBH  
 DRAWN: JAL

JOB NO.: 16-0091  
 DATE: 10/13/2016  
 SCALE: 1" = 40'  
 SHEET NO.: C2.0

SHEET TITLE: PRELIMINARY LAND PURCHASE OPTIONS - 01/16/17

S:\Projects\2016\16-0091\CADD\DWG\ARCHIVE SITE PLAN\_ADDITIONAL LAND\_011617.dwg, Monday, January 16, 2017 5:20:31 PM, Jesse A. Lewter