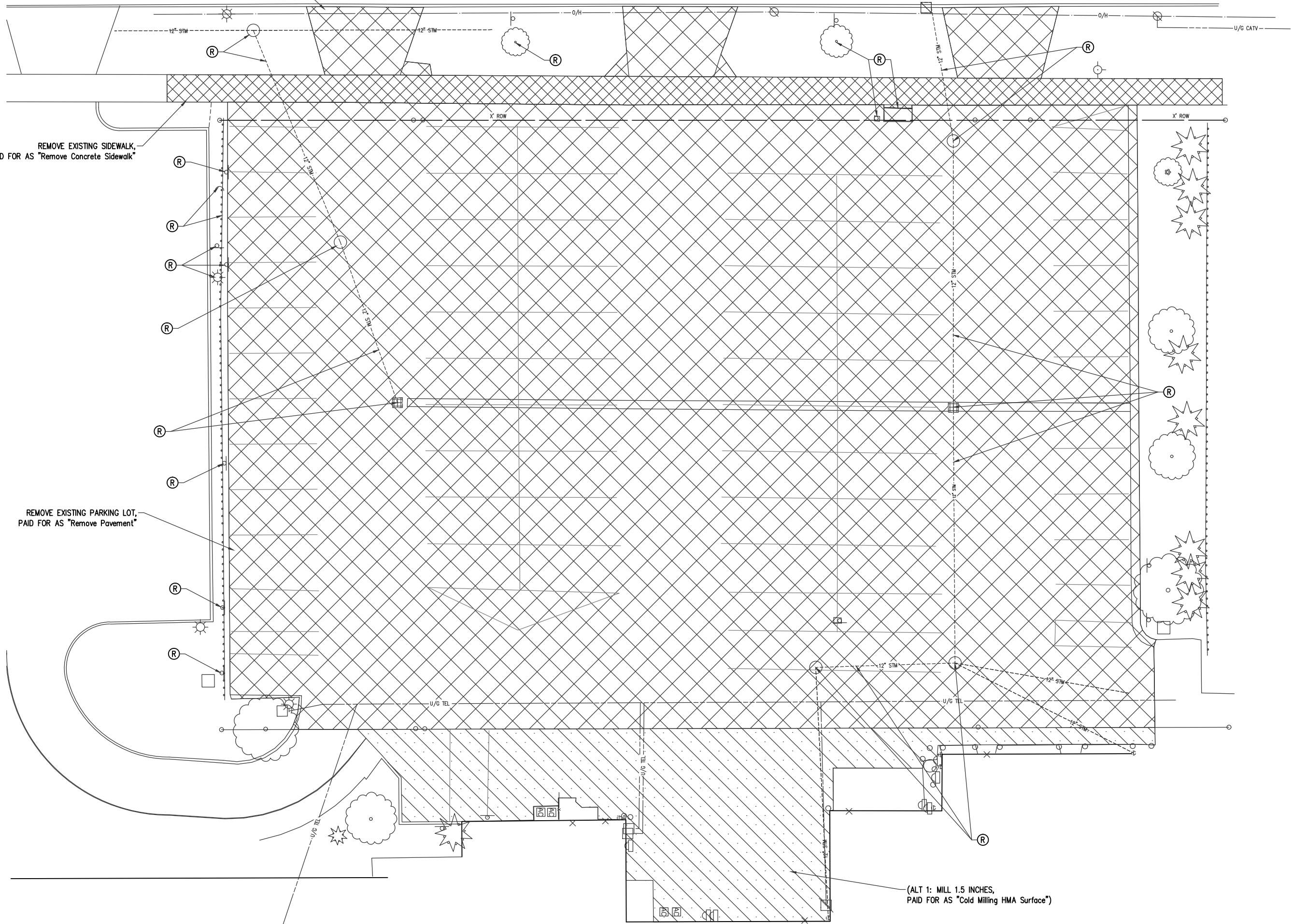
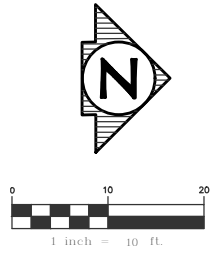


SOUTH BOSTWICK ST

REMOVE EXISTING DRIVEWAYS,
PAID FOR AS "Remove Pavement"

REMOVE EXISTING SIDEWALK,
PAID FOR AS "Remove Concrete Sidewalk"

REMOVE EXISTING PARKING LOT,
PAID FOR AS "Remove Pavement"



(ALT 1: MILL 1.5 INCHES,
PAID FOR AS "Cold Milling HMA Surface")

PLAN DATE: JANUARY 2012
PROJECT MGR: JBM
REVIEWER: RAF
SCALE: 1" = 10'

ROWE PROFESSIONAL SERVICES COMPANY

The ROWE Building
540 S. Saginaw St., Ste. 200, P. O. Box 3748
Flint, MI 48502

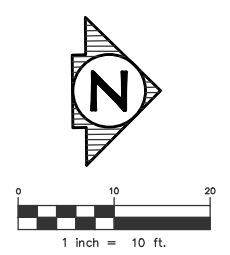
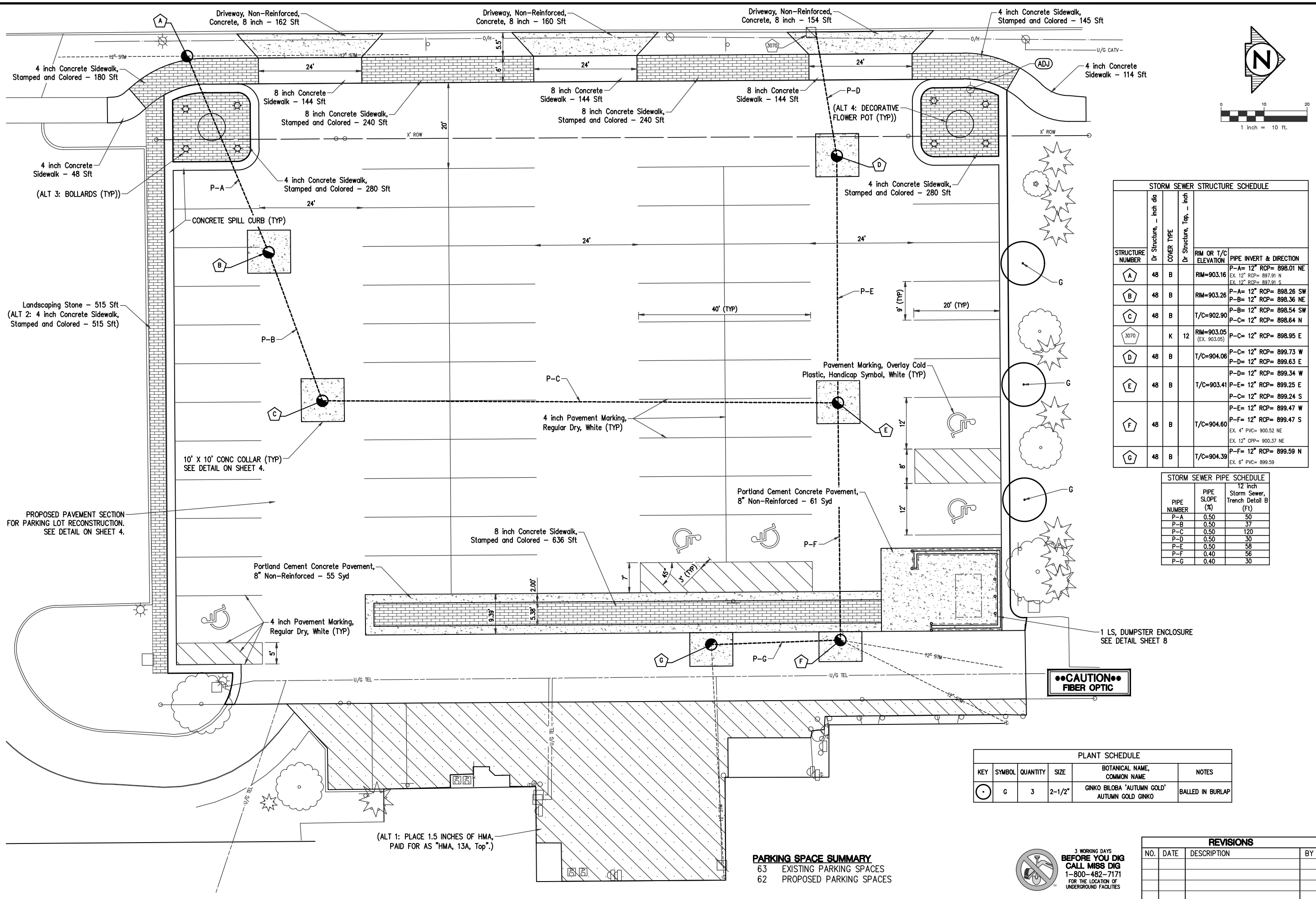
C: (810) 341-7500
F: (810) 341-7573
www.rowepsc.com

PREPARED FOR
CITY OF CHARLOTTE
PARKING LOT NO. 2 RECONSTRUCTION

REMOVAL SHEET

REV:
SHT# 5 OF 8
JOB No: 10C0074

R:\Projects\10C0074\Orig\Construction Drawings\00-10C0074-RELU.dwg PLOTTED: 7/19/2012 2:53 PM



| STORM SEWER STRUCTURE SCHEDULE | | | | | |
|--------------------------------|--------------------------|------------|---------------------------|----------------------------|---|
| STRUCTURE NUMBER | Dr Structure, - inch dia | COVER TYPE | Dr Structure, Top, - inch | RIM OR T/C ELEVATION | PIPE INVERT & DIRECTION |
| A | 48 | B | | RIM=903.16 | P-A= 12" RCP= 898.01 NE EX. 12" RCP= 897.91 N EX. 12" RCP= 897.91 S |
| B | 48 | B | | RIM=903.26 | P-A= 12" RCP= 898.26 SW P-B= 12" RCP= 898.36 NE |
| C | 48 | B | | T/C=902.90 | P-B= 12" RCP= 898.54 SW P-C= 12" RCP= 898.64 N |
| 3070 | K | 12 | | RIM=903.05 (EX. 903.05) | P-C= 12" RCP= 898.95 E |
| D | 48 | B | | T/C=904.06 | P-C= 12" RCP= 899.73 W P-D= 12" RCP= 899.63 E |
| E | 48 | B | | T/C=903.41 | P-D= 12" RCP= 899.34 W P-E= 12" RCP= 899.25 E P-C= 12" RCP= 899.24 S |
| F | 48 | B | | T/C=904.60 | P-E= 12" RCP= 899.47 W P-F= 12" RCP= 899.47 S EX. 4" PVC= 900.52 NE EX. 12" CPP= 900.37 NE |
| G | 48 | B | | T/C=904.39 | P-F= 12" RCP= 899.59 N EX. 6" PVC= 899.59 |

| STORM SEWER PIPE SCHEDULE | | |
|---------------------------|----------------|---|
| PIPE NUMBER | PIPE SLOPE (%) | 12 inch Storm Sewer, Trench Detail B (Ft) |
| P-A | 0.50 | 50 |
| P-B | 0.50 | 37 |
| P-C | 0.50 | 120 |
| P-D | 0.50 | 30 |
| P-E | 0.50 | 58 |
| P-F | 0.40 | 56 |
| P-G | 0.40 | 30 |

| PLANT SCHEDULE | | | | | |
|----------------|--------|----------|--------|---|------------------|
| KEY | SYMBOL | QUANTITY | SIZE | BOTANICAL NAME, COMMON NAME | NOTES |
| ⊙ | G | 3 | 2-1/2" | GINKGO BILOBA "AUTUMN GOLD" AUTUMN GOLD GINKGO | BALLED IN BURLAP |

| PARKING SPACE SUMMARY | |
|-----------------------|-------------------------|
| 63 | EXISTING PARKING SPACES |
| 62 | PROPOSED PARKING SPACES |



| REVISIONS | | | |
|-----------|------|-------------|----|
| NO. | DATE | DESCRIPTION | BY |
| | | | |
| | | | |
| | | | |

PLAN DATE: JANUARY 2012
 PROJECT MGR: JBM
 REVIEWER: RAF
 SCALE: 1" = 10'

ROWE PROFESSIONAL SERVICES COMPANY
 The ROWE Building
 540 S. Saginaw St., Ste. 200, P. O. Box 3748
 Flint, MI 48502
 C: (810) 341-7500
 F: (810) 341-7573
 www.roweps.com

PREPARED FOR
CITY OF CHARLOTTE
PARKING LOT NO. 2 RECONSTRUCTION
 SITE PLAN SHEET
 REV: SHT# 7 OF 8
 JOB No: 10C0074